

# canon printers

**2017 ERC PRINT GUIDE**

# Table of Contents

---

**Downloading/Installing Canon Print Driver .....1**

**Printing using Canon Print Studio Pro.....4**

    Loading on Adobe Photoshop CC 2015. ....4

    Loading on Adobe Lightroom CC 2015.....5

    Setting up for finest quality. ....6

Main Screen: Print Settings. .... 8

Main Screen: Print Settings. .... 9

Main Screen: Layout. .... 10

Main Screen: Color Management..... 12

Printing..... 13

## Downloading/Installing Canon Print Driver

If you are printing from your own personal laptop you need to download the imagePROGRAF PRO-1000 series Full Driver and Software Package from Canon's website.

**1. Download the full driver and software at:**

<https://www.usa.canon.com/internet/portal/us/home/support/details/professional-large-format-printers/professional-inkjet-printers/imageprograf-pro-1000?tab=manuals>

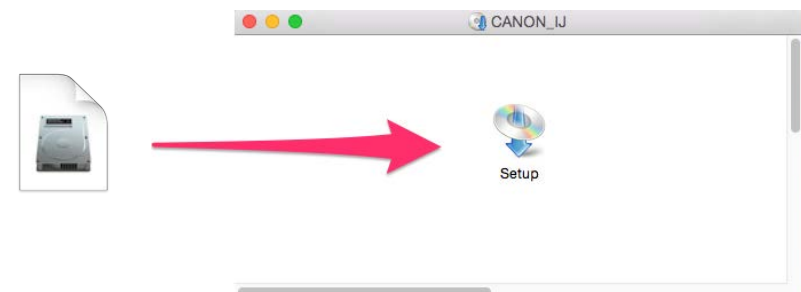
Make sure you download the Full Driver and Software Package.

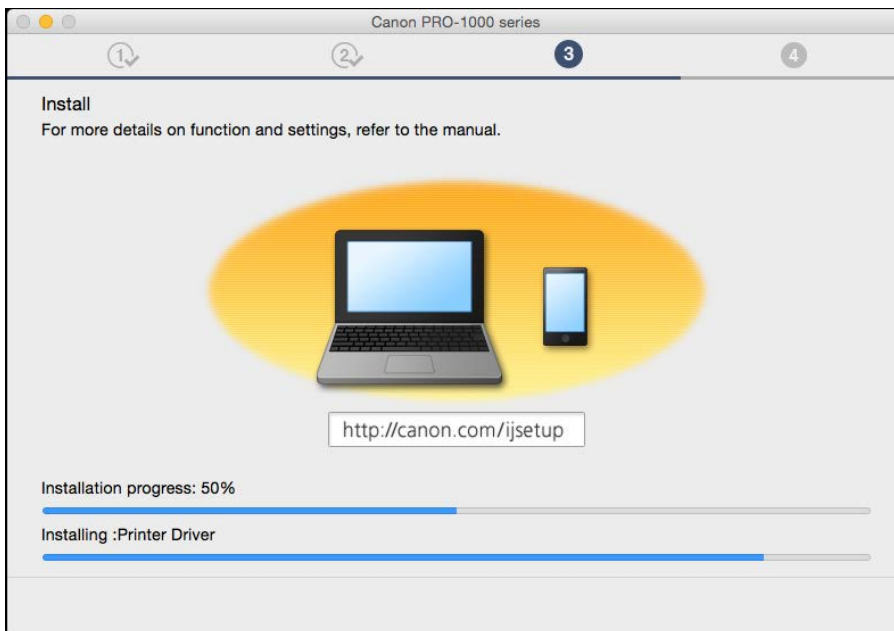
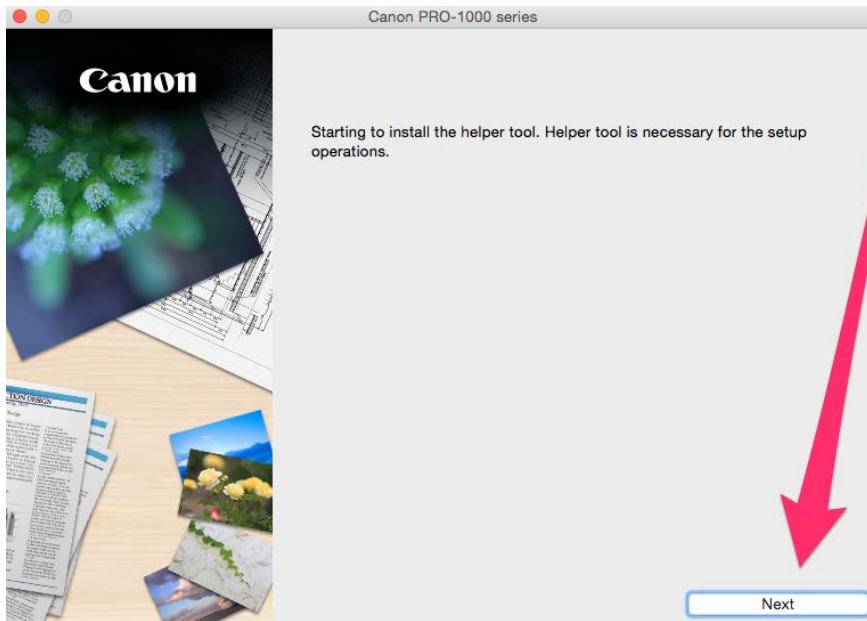
### Drivers & Downloads

Operating System	OS X Yosemite v10.10 (Detected)	Language	English
Drivers	Software	Firmware	Utilities
<b>Recommended</b>			
File Name	Date	File Size	
imagePROGRAF PRO-1000 series Full Driver & Software Package (Mac)	11/25/16	6.81 MB	<input type="button" value="SELECT"/>
<b>Drivers</b>			
File Name	Date	File Size	
imagePROGRAF PRO-1000 series CUPS Printer Driver Ver.16.10.1.0 (Mac)	10/24/16	17.27 MB	<input type="button" value="SELECT"/>

**2. Once the driver has been downloaded, open the .dmg file.**

**3. The .dmg file will open CANON\_IJ. Click on Setup to begin installing.**



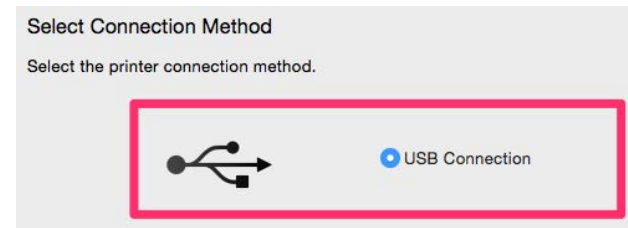


#### 4. Follow the Setup and installation prompts.

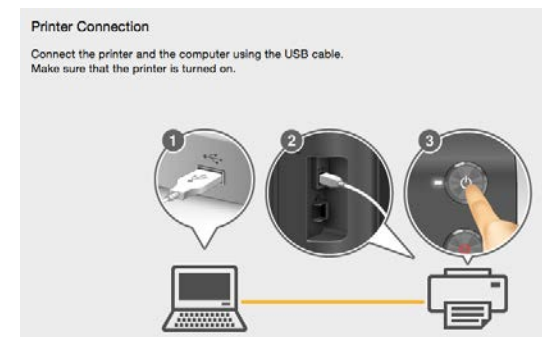
- Step 1: Select 'Start Setup'



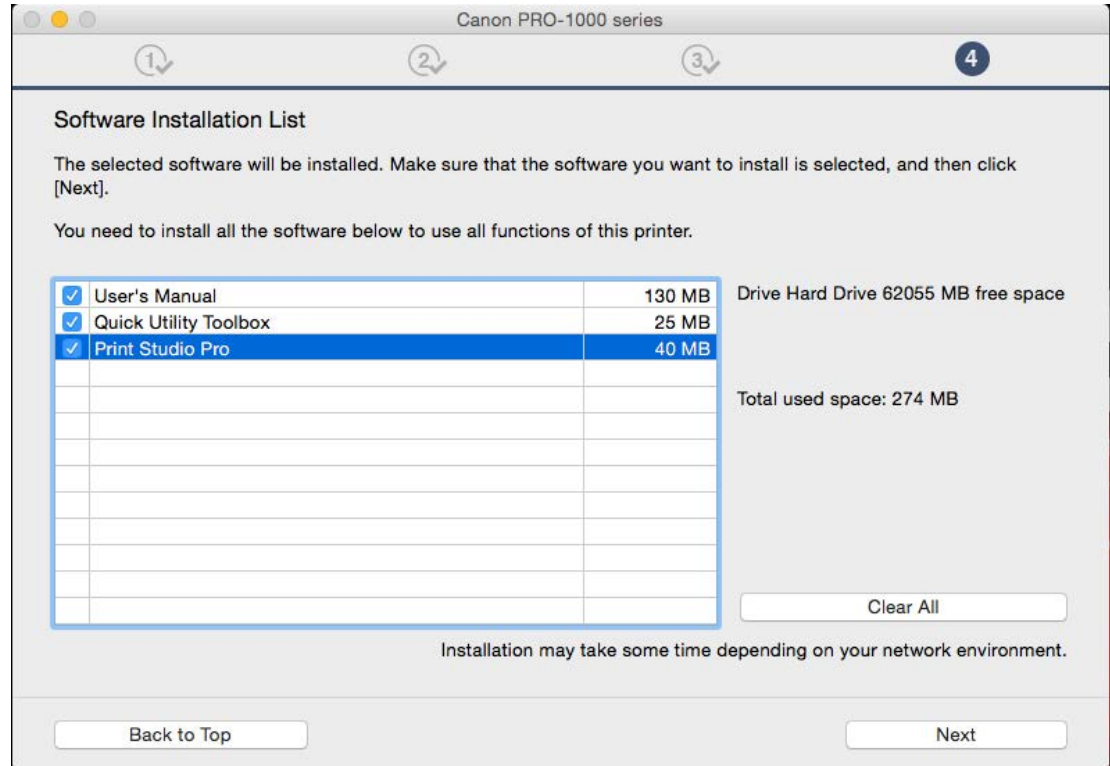
- Step 2: Select Connection Method: 'USB Connection'



- Step 3: Install driver
- Step 4: Connect the printer and computer via USB cable. Make sure printer is turned on.



5. After installing the driver you will be asked which software you want to install. Before doing anything, make sure the Photoshop Application is not open. If it is open, quit. Then select all the available options.
6. After everything has installed, exit the program and you are ready to start printing.



If Adobe Photoshop is left open during the software installation phase, the **Print Studio Pro software will not install correctly.**

**If this happens,** quit out of both Photoshop and the Canon Installer. Reopen the installer and **run through the entire Driver and Software installation Setup again.**

## Printing using Canon Print Studio Pro

When using a Canon printer you need to use their print plug-in instead of the print dialog.

Remember to Soft Proof your images before this step, the plug-in does not simulate your paper profile on screen.

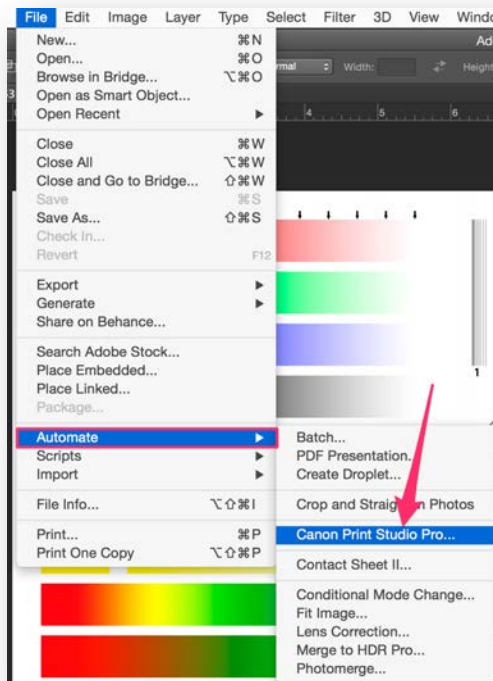
Find the best or suggested rendering intent before loading the plug-in.

As the time of writing Canon Print Studio Pro does not support CMYK files. Make sure your files are RGB before printing.

### Loading on Adobe Photoshop CC 2015.

Make sure the background layer is selected on your image.

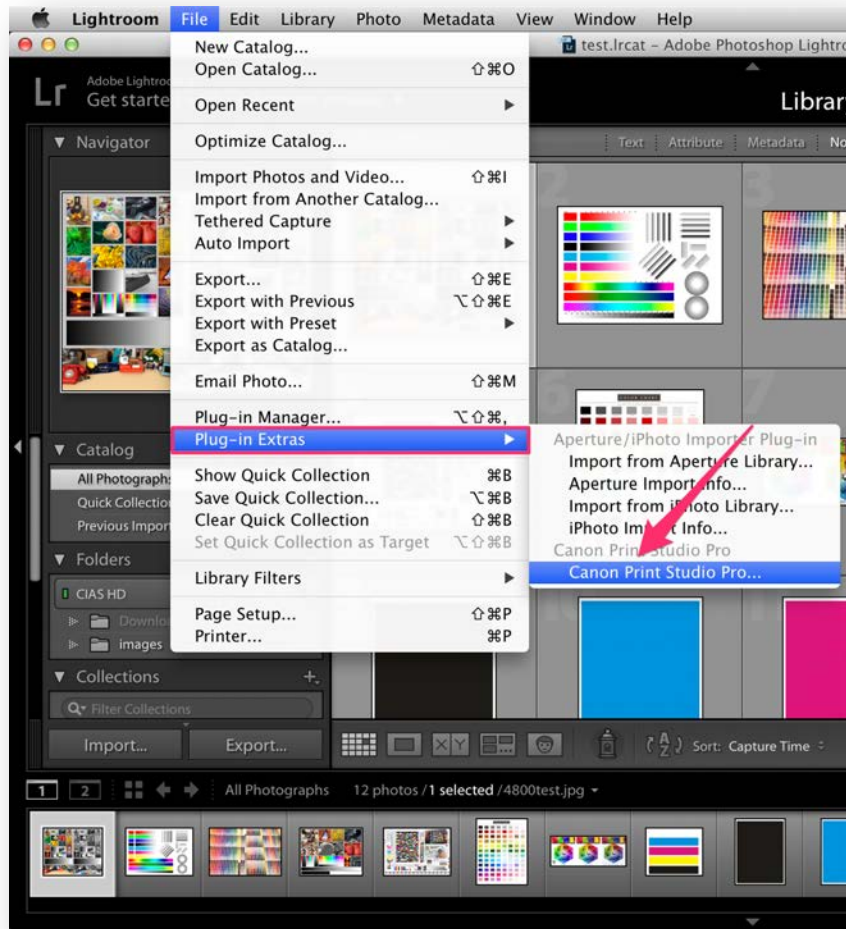
- File > Automate > Canon Print Studio Pro.



## Loading on Adobe Lightroom CC 2015.

Select the image or images that you wish to print.

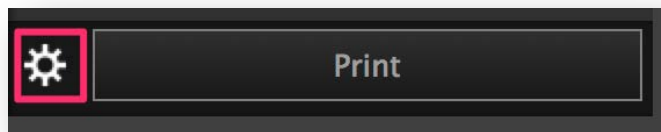
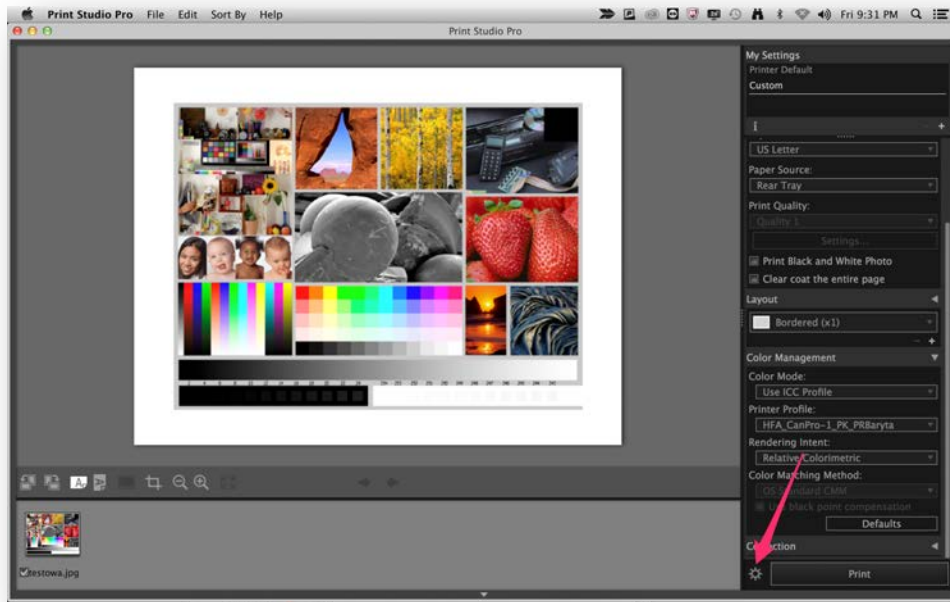
- File > Plug-in Extras > Canon Print Studio Pro...



## Setting up for finest quality.

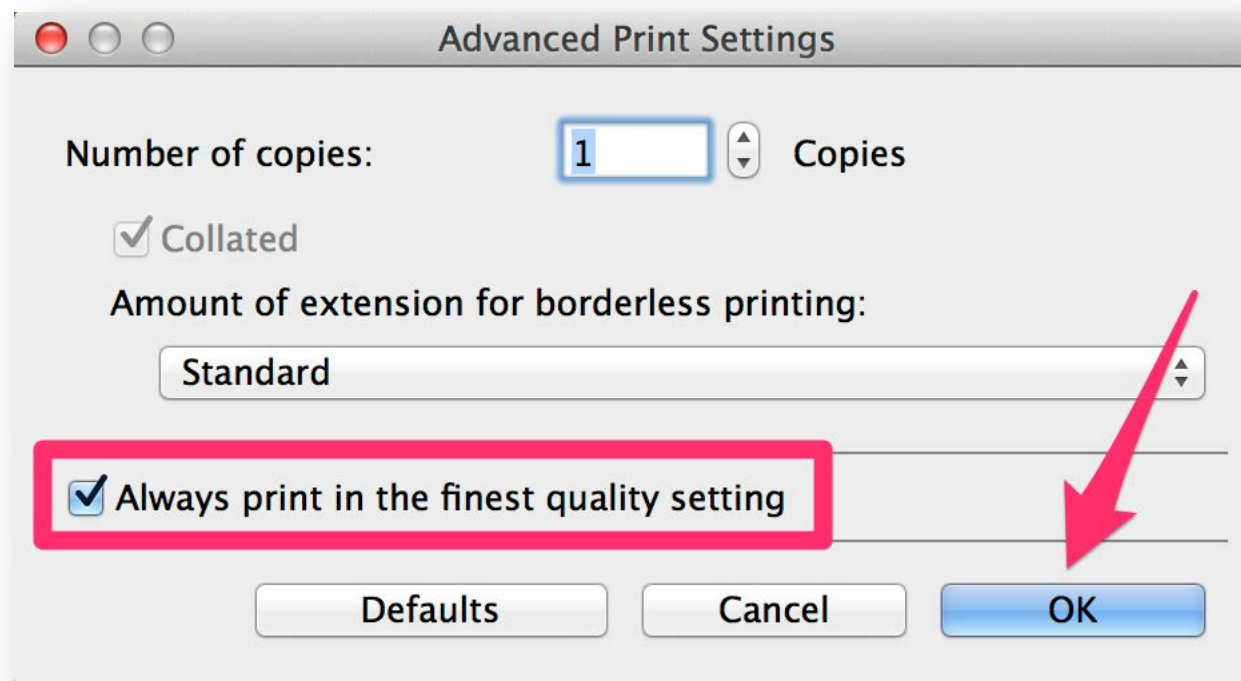
Before setting up the print details you need to change setting to make sure that Canon Studio Pro will print in the highest quality possible.

- Click on the gear icon near the print button.





7. Check Finest Quality on the Advance Print Settings Menu and Click OK.



**Main Screen: Print Settings.**

Don't forget to read the manufacturer suggestions for the paper.

**Print Settings**

**Printer:**  
Canon PRO-1 v1-1 series

**Media Type:**  
Other Glossy Paper

**Paper Size:**  
US Letter

**Paper Source:**  
Rear Tray

**Print Quality:**  
Quality 1  
Settings...

Print Black and White Photo

Clear coat the entire page

**Printer:**

Make sure that the correct printer is selected.

**Media Type:**

Select the media type suggested by the paper manufacturer to use with the profile.

**Paper Size:**

Select your paper size or use custom to create your specific size. Please refer to [Supported paper](#) for more information.

*11x17 is called Tabloid on Canon Software.*

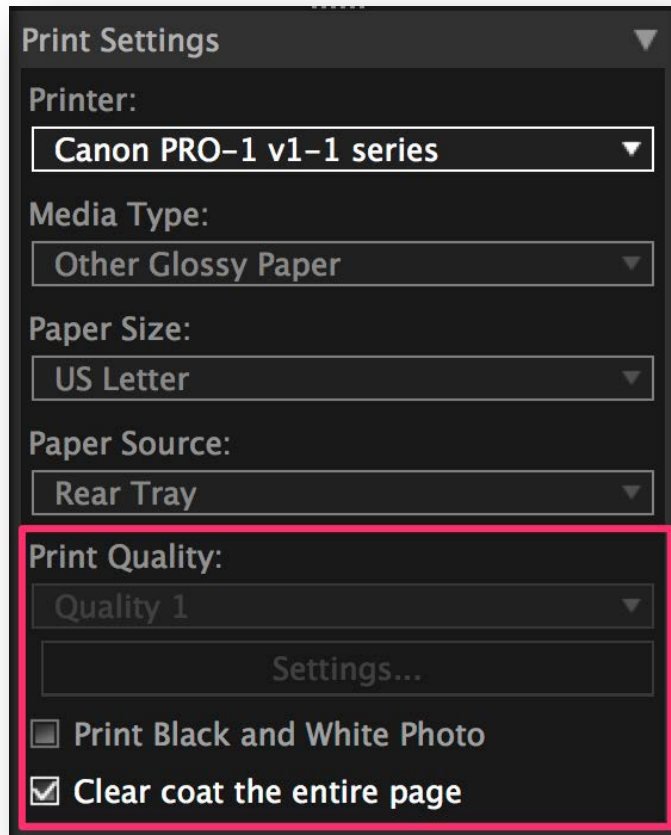
**Media Type:**

Select the media type suggested by the paper manufacturer to use with the profile.

**Paper Source:**

Select the tray that you wish to use. Please refer for instructions to load the paper on [Rear Tray](#) and [Manual Feed Tray](#).

## Main Screen: Print Settings.



Print Settings

Printer:  
Canon PRO-1 v1-1 series

Media Type:  
Other Glossy Paper

Paper Size:  
US Letter

Paper Source:  
Rear Tray

Print Quality:  
Quality 1  
Settings...

Print Black and White Photo

Clear coat the entire page

**Print Quality:**

If you followed the instructions for [Setting up finest quality](#) this box should be grayed. Remember that you have to Setup for finest quality every time.

**Print Black and White Photo:**

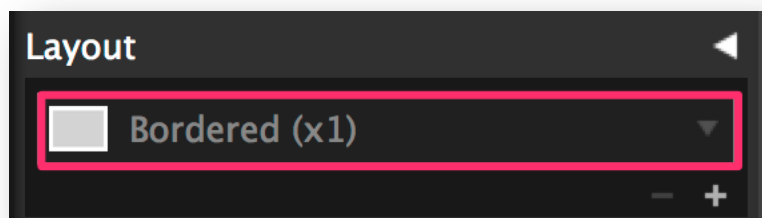
It's suggested that you convert and adjust your image to b&w before loading into the plug-in.

**Clear coat the entire page:**

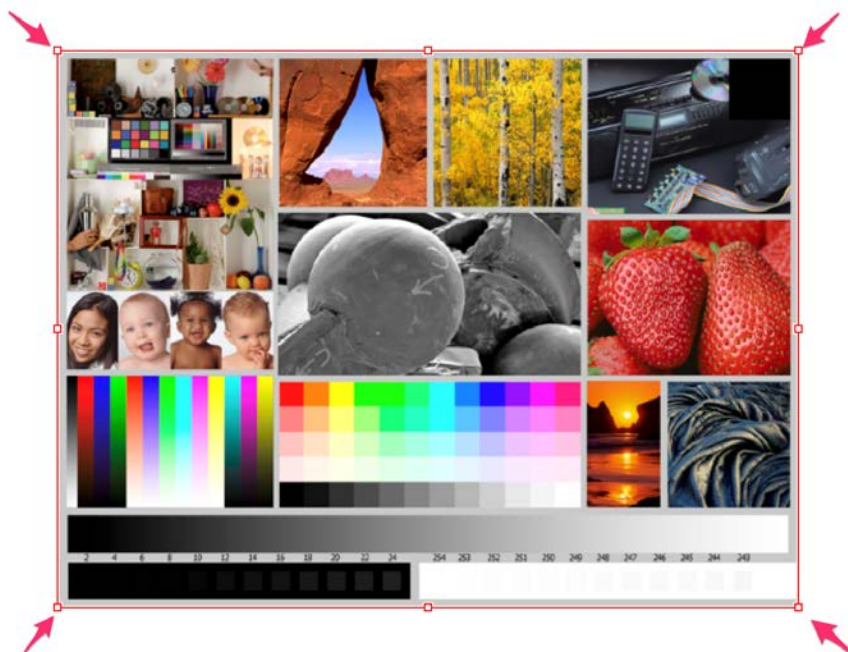
Check this option to have your entire sheet coated.

**Main Screen: Layout.**

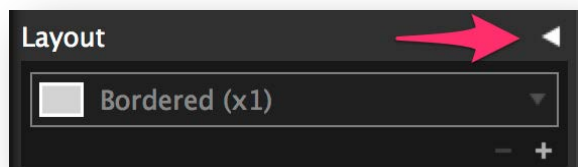
8. Select the desired layout.



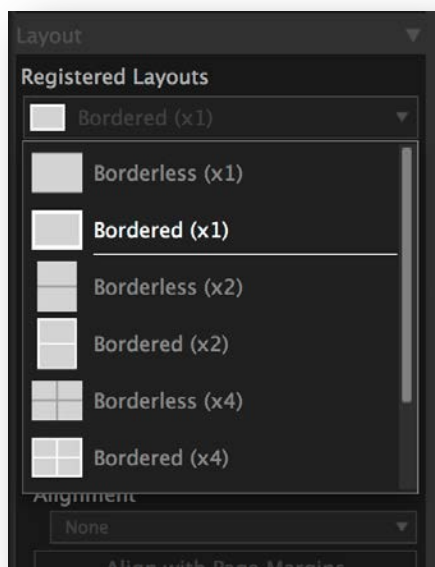
9. And drag the red border around the image to fit the edges.



10. Click on the triangle if you wish to change the Margins, Alignment and Text.

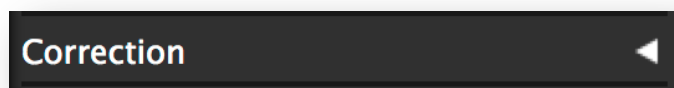
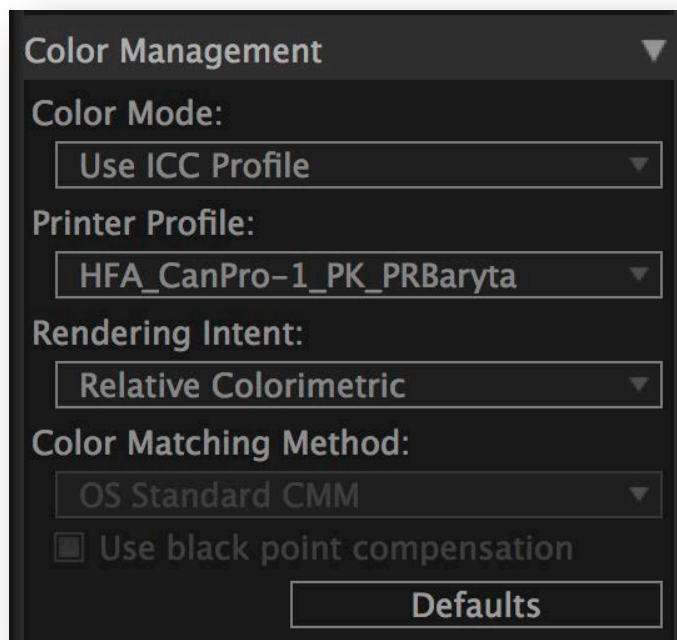


11. Also you can select here for Contact Sheet Prints.



*To load more than one image of the time on the plug-in you need to select all the images you want on Adobe Lightroom CC 2015 or have all images open on Adobe Photoshop CC 2015.*

## Main Screen: Color Management.

**Color Mode:**

Select "Use ICC Profile".

**Printer Profile:**

Select the profile for your paper.

**Rendering Intent:**

This setting is image depended. Choose the one you had better results while soft proofing or the one recommended by the manufacturer.

*The Canon software does not simulate any of the settings selected here. Soft proof your images before print.*

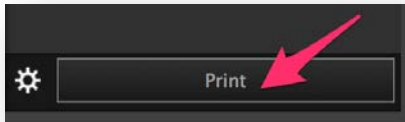
**Correction:**

Avoid this menu. Correct your images before loading them on the plug-in.

## Printing.

After setting up all your settings at Canon Studio Pro.

- Load the paper.
- Click on Print.



### 12. Review your settings and click OK.

